



THE SHARPMOTIONART ZAURUS PLAYER V 1.0





The SharpMotionART Zaurus Player allows you to view interactive, graphic animations on your Zaurus PDA. The SharpMotionART file format is ideal for mobile devices and networks due to its ultra-compact file size. Creating SharpMotionART content is easy using the PC Authoring Tool. You can view the content on many kinds of PDA's and Cellphones, including your Zaurus. Create and watch animated short subjects, infographics, greeting cards and more!

Viewing SharpMotionART Files

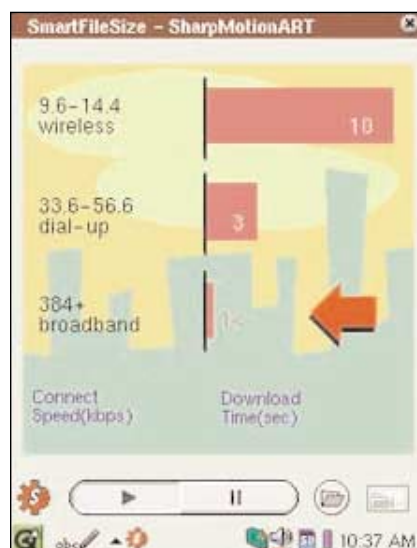
Transferring SharpMotionART files onto your Zaurus is easy using either Qtopia™ Desktop or Intellisync®.

> Using Qtopia Desktop on your PC, drag and drop SharpMotionART files from your PC desktop onto the Qtopia Desktop Documents Index screen. To transfer, select 'Sync' from the Menu bar and 'Sync' from the sub-menu.

> Using Intellisync on your PC, drag and drop SharpMotionART files from your PC desktop onto the Intellisync Accessfolder shortcut icon. This places them into the File Transfer dialog box. Open the File Transfer dialog box, select the files in your accessfolder and click the transfer to your PDA arrow button.



The SharpMotionART Zaurus Player automatically displays all SharpMotionART files on the device in the playlist. Tap on the file you want to view and it will start to play. During playback of SharpMotionART files all you need to do is tap on navigational elements or buttons (red arrow in the screenshots to the left). These screenshots are from an actual file which consists of many animation cells or in-between frames (many more than the 2 pictured here) which describes a benefit of SharpMotionART's small file size.



The most unique aspect of SharpMotionART Player is how the file is played back after being transferred onto a device (PC, PDA, Cell Phone, or otherwise). Once installed, the SharpMotionART Player performs key calculations to determine optimum playback of each file on each device. Key calculations account for device power (CPU) and the complexity of each SharpMotionART file in order to determine frame rate, or the amount of in-between frames the device can generate for playback within the given timeframe. Device CPU's run at many different speeds and as a result, the SharpMotionART Player generates different amounts of in-between frames accordingly.

Zaurus Player System Requirements

Any Zaurus (SL-5xxx) Linux based embedded OS QT Palmtop Environment.

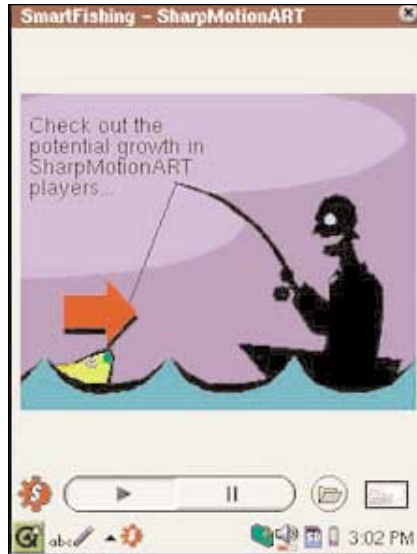


Using The SharpMotionART Player

Tap the SharpMotionART Zaurus icon from the Applications start menu to launch the Player application. Tap the folder icon located on the menu bar at the bottom of the screen to view the contents of the Playlist.



In order to start playback, simply tap on the file name in the playlist.



While a file is playing you can tap the movie mode icon located on the menu bar at the bottom right of the screen to view the content in full screen.



If the file screen size is wider than it is tall, movie mode will play full screen landscape mode, if the file screen size is taller than it is wide, then movie mode will play full screen portrait mode. Simply tap the movie mode icon in full screen mode to return to the standard screen.



SharpMotionART™ Copyright © 2002 Sharp Corporation

Company and product names are the trademarks or registered trademarks of the relevant companies.

SharpMotionART software includes software developed by the Apache Software Foundation and is also based in part on the work of the Independent JPEG Group.