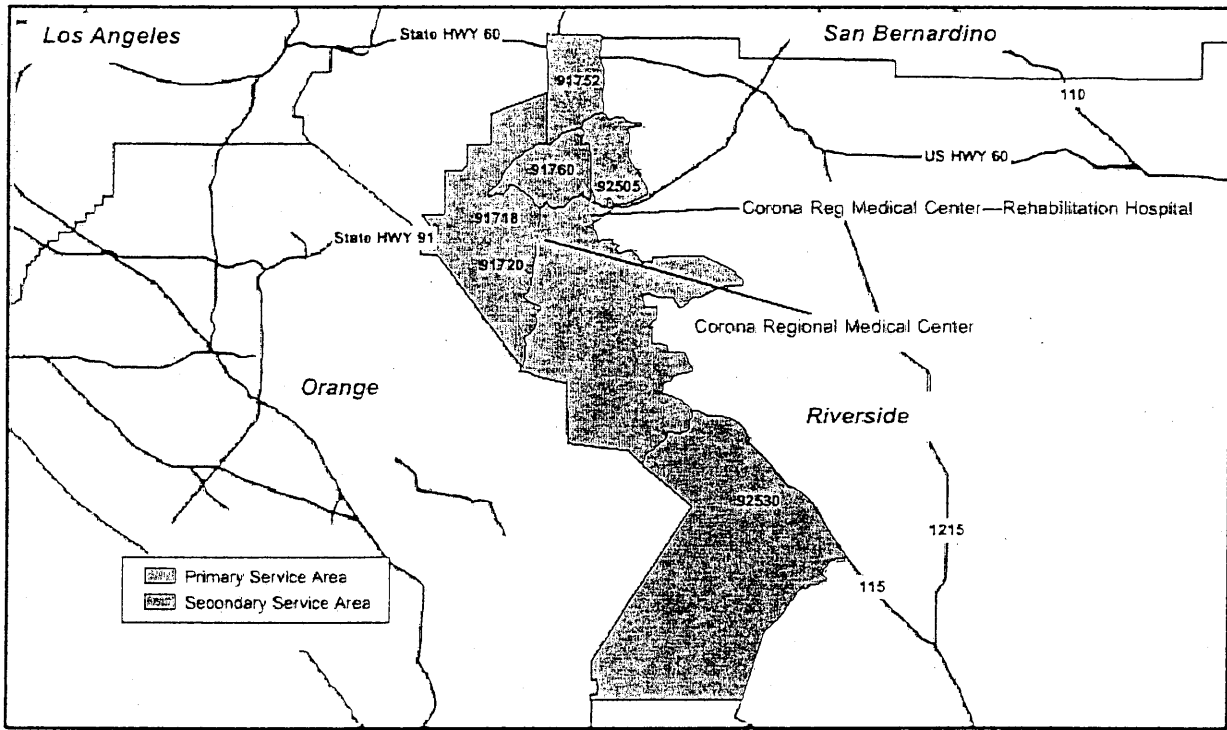


Patient Origin

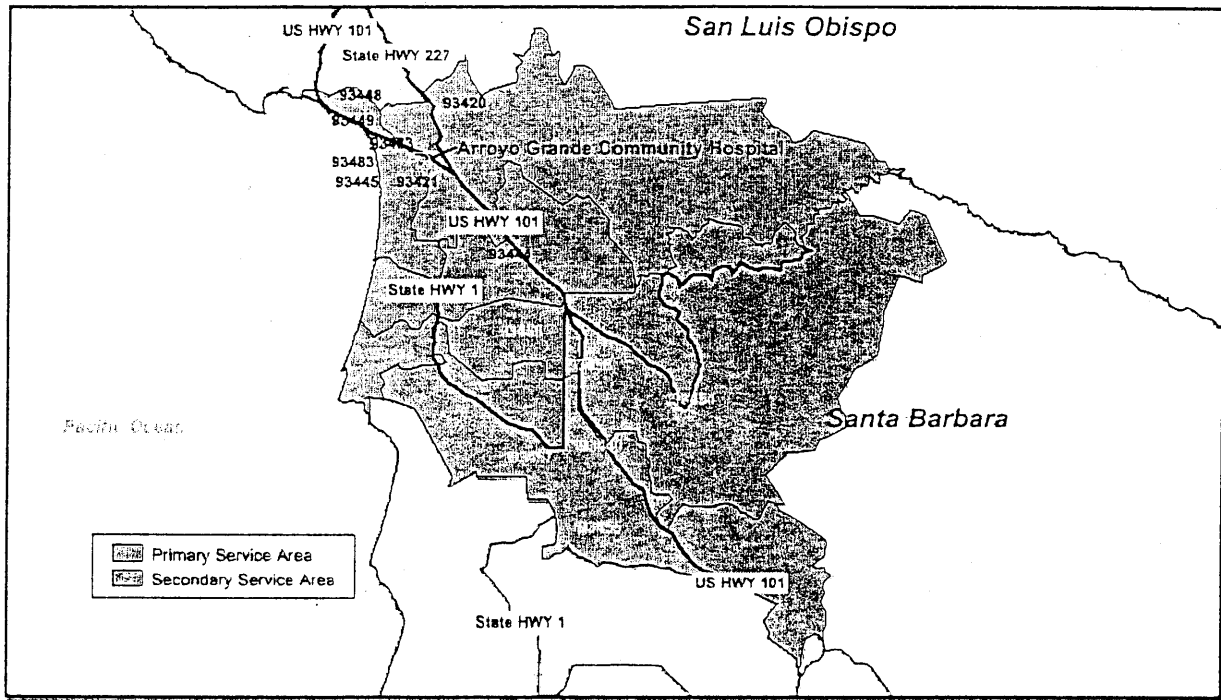
According to the State of California 1999 statistic for patient origin from the hospital's primary service area, Corona Regional Medical Center captured 44.4% of the market. It is expected that this figure has increased since 1999. The Primary and Secondary Service Areas are noted on the map below.



Managed Care

Corona Regional Medical Center's managed care volume exceeds \$110 million in annual gross revenue and is representative of the following major payors: PacifiCare (inclusive of Secure

Vista Hospital Systems, Inc.



Managed Care

Arroyo Grande Community Hospital is a solid community institution, with annual projected managed care gross revenue of nearly \$27 million or approximately 40% of the hospital's total gross revenue. Its dominant medical group partner, SLO Select IPA, supports the primary care inpatient and outpatient services provided at Arroyo Grande. While unique in its market niche, the hospital also serves as a "feeder" of tertiary cardiac services to sister facility, French Hospital Medical Center. Due to the hospital's geographic location and the area's recognition as a travel destination, the facility attracts a loyal following of local residents as well as tourists visiting the area.

Payors include, but are not limited to, Blue Shield, Health Net, United HealthCare and PacifiCare. All managed care agreements are currently fee-for-service.

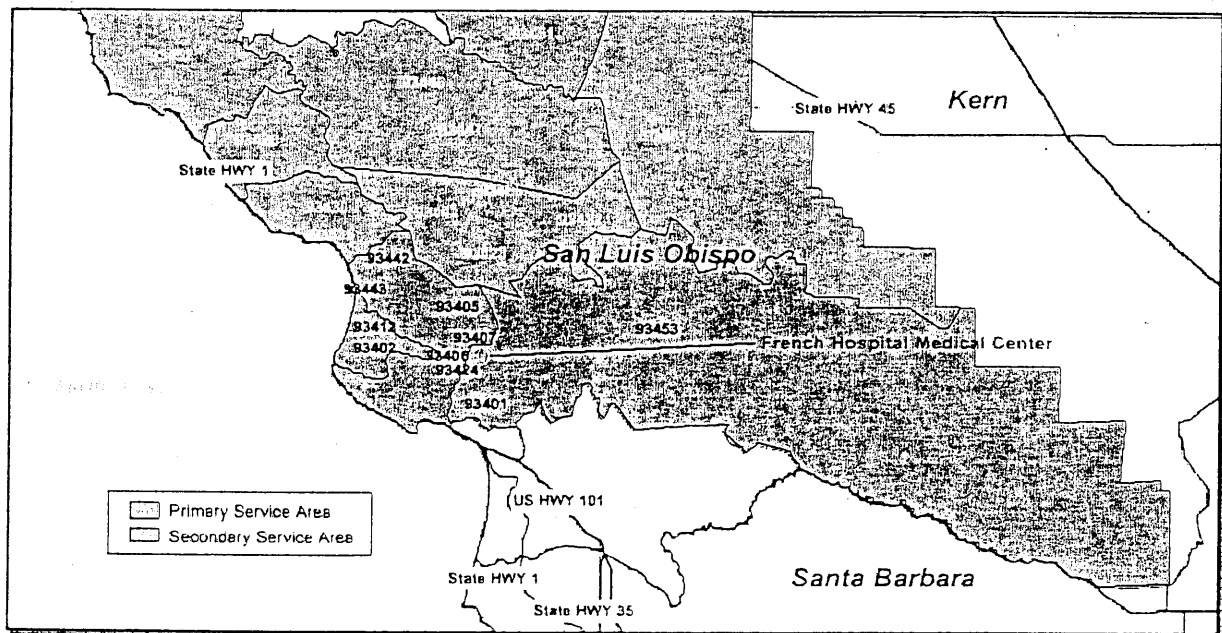
General Hospital Name/ Location	Licensed Acute Care Beds	Payor Mix	ALOS (In days)	Occupancy
Arroyo Grande Community Hospital	53 G/A* 12SN	43.9% Medicare 8.5% Medi-Cal 47.6% Priv/Other	4	61%
San Luis Obispo General Hospital	70	17.1% Medicare 48.9% Medi-Cal 34.0% Priv/Other	4	15%
Twin Cities Community Hospital	84	38.5% Medicare 10.7% Medi-Cal 50.7% Priv/Other	4	58%
Sierra Vista Regional Hospital	201	30.2% Medicare 13.1% Medi-Cal 56.7% Priv/Other	5	46%
SUBJECT: French Hospital Medical Center	112	39.3% Medicare 0.5% Medi-Cal 60.2% Priv/Other	4	45%

Office of Statewide Health Planning and Development (OSHPD)

G/A – General Acute- Care, SN – Skilled Nursing

Patient Origin

According to the State of California 1999 statistic for patient origin from the hospital's primary service area, French Hospital Medical Center captured 34% of the market. The Primary and Secondary Service Areas are noted on the map below. There is some overlap between the Primary Services Areas for Arroyo Grande Community Hospital and French Hospital Medical Center.



Vista Hospital Systems, Inc.